

Magnet Replacement Instruction Guide

for Berkshire #SCB-1015, #SCB-2015 & Classic #SCC-1008, #SCC-2008

Supplies included in this kit:

11/64" drill bit, screw, rubber washer, top magnet plate, magnet, bottom magnet plate, flat washer, nut, and template

Tools needed:

electric drill, wrench, screwdriver & scotch tape

1. Cut out the paper template to the right.
2. Fold on the dotted lines. ("X" must be visible)
3. Open mailbox door and slide the template between the notches at top of the mailbox. (make sure one half is inside the mailbox and the other half is outside the mailbox) *See Diagram 1*
4. Tape template to mailbox so it will not move.
5. Align 11/64" metal drill bit with "X" to make hole through top of mailbox.
6. Remove template and install magnet using screw, rubber washer top magnet plate, magnet, bottom magnet plate, flat washer and nut that were supplied. *See Diagram 1*

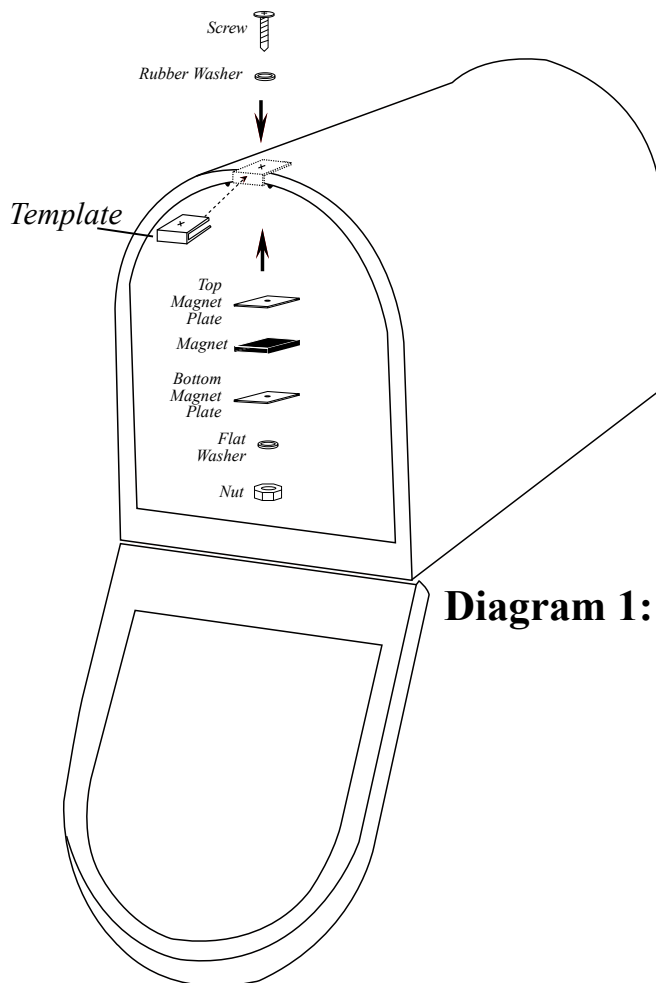
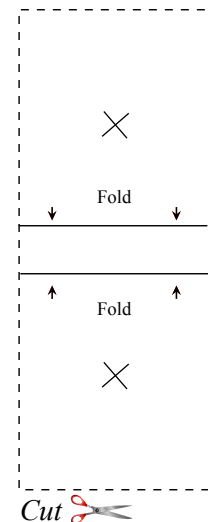


Diagram 1:

Cut out and use template to insure proper drill bit placement



Revision Date: 06/23/2017
Drawing Number: 12612

**SPECIAL
LITE**
PRODUCTS LLC.

1634 Latrobe-Derry Road • Loyallhanna, PA 15661 • Phone: (724) 537-4711 • Fax: (724) 537-9313
www.specialliteproducts.com • customer_service@specialliteproducts.com